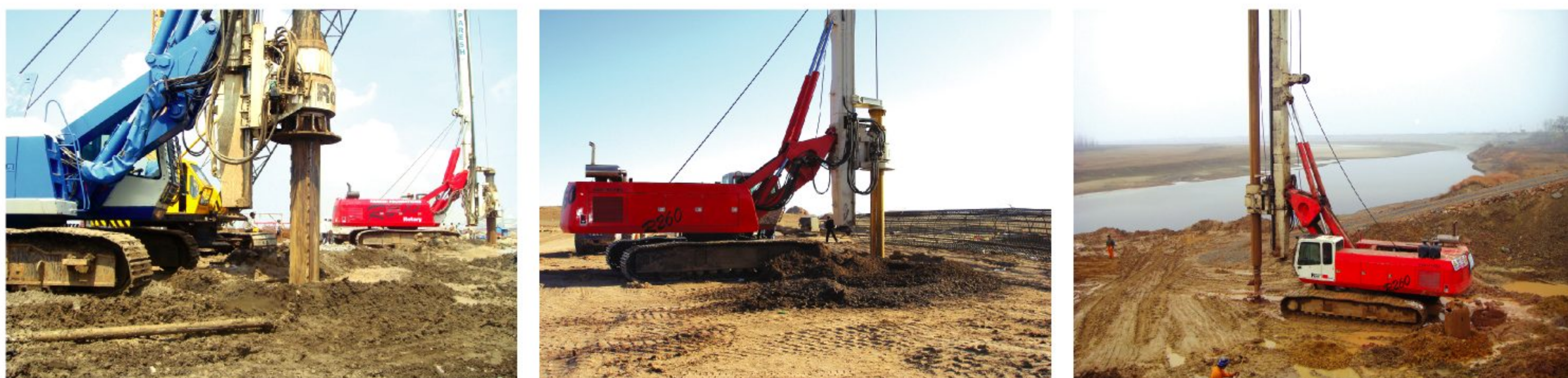




Rotary Drilling Rigs

R150/R180/R200/R230/R260



- Optimized specific Scalable Caterpillar Base Plate, auto up and down folding mast, extensible stem and JOY-STICK control. Automatic monitoring the drill depth, self-adjusting verticality, auto-position rotation, integrated full-color screen and monitoring system could monitor the working condition of all machine. And has the logic control to avoid misoperation. With the feature of high drill torque, high working efficiency, convenient transportation, high reliable.
- With original CUMMINS or CAT Engine, PAL-FIN processor, REXROTH mast winch hydraulic motor, balance valve and reducer, REXROTH traveling reducer, motor and balance valve, REXROTH rotating reducer and motor, REXROTH combined hydraulic pump, multiple valve of auxiliary pump, REXROTH power head motor, electromagnetic reversing valve and relief valve, Italy HYDRO-CONTROL multiple valve of mast pump circle, Italia power head reducer, Italy BERCO undercarriage system, PARKER oil filter.

Model		R150	R180	R200	R230	R260	
Max.drilling diameter	With casting	mm	1000	1200	1500	1800	2000
	Without casting	mm	1500	1800	2000	2200	2200
Max. drilling depth		m	48	52	60	70	80
Engine	Rated output	kW	190	220	220	343	343
	Max. rotary speed	r/min	2300	2300	2100	1800	1800
	Fule tank volume	L	350	380	400	430	540
Rotary head	Max. torque	kN.m	200	200	200	230	260
	Speed	r/min	8-32	8-32	8-32	8-32	8-32
	Max.spin-off speed	r/min	126	126	126	126	126
Main winch	Max.pull force	kN	160	185	185	260	260
Auxiliary winch	Max. pull force	kN	80	80	97.8	97.8	97.8
Mast tilting angle	Tilt (left to right)	°	6	6	6	6	6
	Tilt to front	°	5	5	5	5	5
	Tilt to rear	°	90	90	90	90	90
Feed cylinder	Max.pull-down force	kN	150	160	180	200	220
	Max.pull-up force	kN	160	180	200	220	240
	Stroke	m	4	4	5	5	5
Undercarriage	Crawler length	mm	4725	5000	5200	5400	5760
	Track shoe width	mm	700	750	800	850	900
	Extendable tracks crawler width	mm	4000/3000	4000/3000	4200/3200	4300/3000	4400/3200
	Max.trveling speed	km/h	3	2.9	2.7	2.1	1.7
Feature size	Working appearance size(L x W x H)	mm	7880 x 3800 x 18000	8200 x 4000 x 19200	7840 x 4200 x 20760	9150 x 4300 x 22070	10940 x 4400 x 23900
	Transport dimensions(L x W x H)	mm	3100 x 3000 x 12800	3200 x 3000 x 14200	14685 x 3200 x 3453	16200 x 3100 x 3480	3500 x 3200 x 16600
Overall weight		t	49	58	65	76	82

